



المنطقة الحرة بصلالة
SALALAH FREE ZONE

MARKETING KIT

TURKISH INTERNATIONAL HUB

PAZARLAMA METNİ

ULUSLARARASI TÜRK MERKEZİ







المنطقة الحرة بصلالة
SALALAH FREE ZONE

MARKETING KIT

TURKISH INTERNATIONAL HUB

PAZARLAMA METNİ

ULUSLARARASI TÜRK MERKEZİ



The Sultanate of Oman is the third largest country in the Arabian Peninsula, with a total area of **309,500 square kilometers** (approximately 120,000 square miles) and a coastline which stretches for over **3,000 kilometers** overlooking the Arabian Gulf and the Sea of Oman.

STRATEGIC LOCATION

Oman is strategically located at the junction of three of the world's largest continents – Africa, Europe and Asia. Poised at the entrance to the Arabian Gulf, the source of two-thirds of the world's oil exports, Oman sits on East-West trade routes, ensuring easy access to the markets in the Middle East, India, South-East Asia, Africa and Europe. It offers significantly shorter supply chains and shorter on-water inventories than other GCC ports and offers easy access to four of the world's prime markets - India, the European Union, Africa and China.

GEOGRAPHICAL BOUNDARIES

The Sultanate borders Saudi Arabia and the United Arab Emirates to the west and the Republic of Yemen in the south, with the Straits of Hormuz to the north-east of the Arabian Sea.

ADMINISTRATIVE DIVISION

Muscat, the capital of the Sultanate, is in the north part of the country. The country is divided into nine administrative regions: Muscat, Batinah South and North, Dakliyah, Dhahirah, Sharqiah South and North, Wusta, Dhofar, Musandam and Buraimi. It has 61 provinces known as Wilayats.

Umman sultanlığı, toplam alanı **309,500 kilometre kare** olan (yaklaşık 120,000 mil kare) ve Arap Körfezi ve Umman Denizine bakan **3,000 kilometre** uzunluğundaki kıyı şeridiyle birlikte Arap Yarımadasının en büyük üçüncü ülkesidir.

STRATEJİK KONUM

Umman stratejik olarak dünyanın en büyük üç kıtası olan Afrika, Avrupa ve Asya'nın kesişim noktasındadır. Arap körfezinin girişinde olan, dünya petrol ihracatının üçte ikisinin kaynağı olan Umman, Orta Doğu, Hindistan Güneydoğu Asya, Afrika ve Avrupa pazarlarına kolay erişim sağlayan Doğu-Batı ticaret bloğu üzerinde konumlanmıştır. Önemli ölçüde daha kısa tedarik zinciri ve diğer GCC limanlarına göre daha kısa deniz yolu ve dünyanın en önemli 4 pazarı olan Hindistan, Avrupa Birliği, Afrika ve Çin pazarlarına kolay erişim sağlar.

COĞRAFİ SINIRLAR

Sultanlık, Arap Denizinin kuzeydoğusunda Hürmüz Boğazıyla birlikte, batıda Suudi Arabistan ve Birleşik Arap Emirlikleri, güneyde Yemen Cumhuriyeti ile sınır komşusudur.

İDARİ BÖLÜM

Sultanlığın başkenti olan Maskat ülkenin kuzey kısmında yer alır. Ülke dokuz idari bölgeye ayrılmıştır: Maskat, Batinah Güney ve Kuzey Yönetimi, Dakliyah, Zahira, Şarkiyeye Güney ve Kuzey, Vusta, Zufar, Musandam ve Buraimi. Vilayetler olarak bilinen 61 bölgeye ayrılır.

THE WEATHER IN SALALAH

The temperature is moderate throughout the year except in summer period when there is a drop in the temperature called Alkhreef, this is one of the reason why significant number of tourists from the Gulf and other countries arrive in Salalah in this period.

LANGUAGE & RELIGION

Arabic is the official language of Oman and English is widely spoken and used in the business sectors. Swahili and Indian is also another language that some Omani people can speak. Islam is the official religion of Oman. Omani's are tolerant towards believers of other faiths who are allowed to practice their religion.

The Sultanate of Oman has successfully pursued a policy to integrate with the global community. It is a member of the United Nations, the Arab league and the Gulf Cooperation Council. Oman has consistently ranked first in peace and stability in the middle East and ranks high in economic freedom among all the Arab countries.

SALALAH'TA İKLİM

Yaz döneminde Alkhreef adı verilen sıcaklık düşüşü dışında sıcaklık yıl boyunca orta seviyelerdedir, bu sebeple Körfezlerden ve diğer ülkelerden bir çok turist Salalah şehrini bu dönemde ziyaret eder.

DİL & DİN

Umman'ın resmi dili Arapçadır ve iş sektörlerinde İngilizce yaygın olarak kullanılır. Swahili dili ve Hintçe de bazı Ummanlıların konuşabildiği diller arasındadır. Oman'ın resmi dini İslamdır. Ummanlı insanlar dinlerini özgürce yaşayan diğer insanlara karşı saygılıdır.

Umman Sultanlığı dünya halkıyla bütünleşme konusunda başarılı bir politika izlemiştir. Birleşik Devletler, Arap birliği ve Körfez Arap Ülkeleri İşbirliği Konseyi üyesidir. Umman devamlı olarak Orta Doğuda huzur ve istikrar konusunda birinci sırada olmuştur ve tüm Arap ülkeleri arasında ekonomik özgürlük hususunda ilk sıralarda yer almıştır.



The Sultanate of Oman The Potential, The Place to Set Up Your Business

Umman Sultanlığı İşinizi Kurmanız için Potansiyel Yer



Political and Economic Stability

- Stable, secure nation in a dynamic and strategic region.
- Considerable investment in first-world infrastructure.

Politik ve Ekonomik İstikrar

- Dinamik ve stratejik bir bölgede istikrarlı, güvenli bir ulus.
- Gelişmiş bir altyapı kapsamında önemli yatırım.

Diversification

- Government focus on diversification, industrialization and privatization to reduce reliability on hydrocarbon revenues.

Çeşitlilik

- Hidrokarbon gelirlerine olan bağıllığı azaltmak için hükümet çeşitliliğe, sanayileşmeye ve özelleştirmeye odaklanmıştır.

Strategic Geographic Location

At the center of the east-west nexus joining markets in Europe, Asia and North America in addition to the close proximity to Africa and at the crossroads of the Middle East, Africa, and Asia.

Stratejik Coğrafik Konum

Afrikaya olan yakınlığının ve Orta Doğu, Afrika ve Asya'nın kesişiminde olmasına ek olarak Avrupada doğu-batı bağlantı noktasını birleştiren pazarların merkezindedir.



Trade agreement

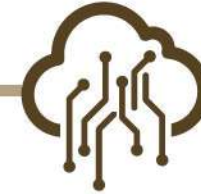
Signatory of WTO, GCC common market, GAFTA, FTAs with US, Singapore, Iceland, Norway, Switzerland and Lichtenstein.

Ticaret Anlaşması

Dünya Ticaret Örgütü, Körfez İşbirliği Konseyi ortak pazarı, GAFTA, Birleşik Devletler, Singapur, İzlanda, Norveç, İsviçre, Lihtenştayn ile Serbest Ticaret Bölgesi anlaşmaları İmza Sahibi.

Infrastructure

Modern infrastructure with good roads, airports, seaports and communications.

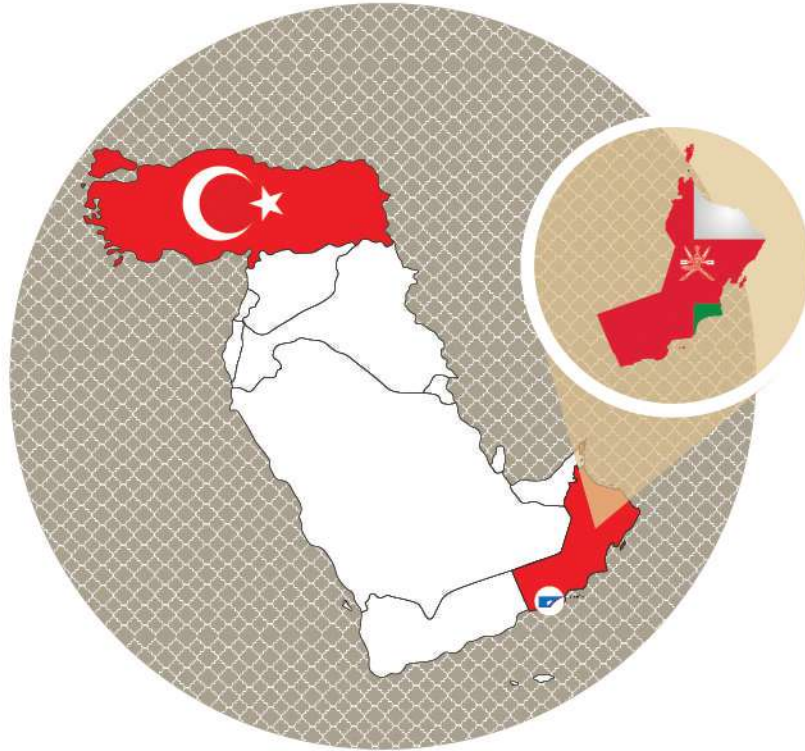


Altyapı

İyi yollar, havaalanları, limanlar ve ulaştırmalara sahip modern altyapı.



Country Backdrop THE SULTANATE OF OMAN



Salalah Free Zone Co.
duty timing
Sunday - Thursday
8.00 am 3.00 pm
(Except during the Holy
Month of Ramadan)

Salalah Serbest Bölge
Şirketi çalışma günleri
Pazar- Perşembe
08:00 ile 15:00 arası
(Ramazan Ayı süresi hariç)

Ülke Temel Bilgileri UMMAN SULTANLIĞI

TOTAL AREA

309,500 Square Kilometers



TOPLAM ALAN

309,500 Kilometre kare

POPULATION

4,653,025 According to
NCSI January 2019



NÜFUS

İstatistiksel Bilgi Ulusal
Merkezi Ocak 2019
sayılarına göre 4,653,025

CAPITAL

Muscat



BAŞKEN

Maskat

LANGUAGE

Arabic & widespread
use of English



DİL

Arapça & geniş
İngilizce kullanımı

CURRENCY

Omani Rial (OMR)
pegged to USD
at 0.385 OMR



PARA BİRİMİ

0.385 OMR üzerinden
Dolara Sabitlenmiş
Umman Riyali

WEATHER

Hot & Humid in Summer,
Cool in Winter



İKLİM

Yazın Sıcak & Nemli
Kışın Serin

COUNTRY CODE

+968



ÜLKE KODU

+968

TIME ZONE

GMT +4



ZAMAN DİLİMİ

GMT +4

WEEKEND

Friday & Saturday



HAFTASONU

Cuma & Cumartesi



SALALAH CITY

Salalah is the second largest city of Sultanate of Oman. It is a coastal city, laying on the Indian Ocean. It is a unique place in the Arabian Peninsula. On the northern side, it has mountain range, with greenery and lakes (in Khareef Season). On the southern side, it has lovely beaches, which are sunny from September to June every year. Salalah is a city spread between these mountainous regions and the Indian Ocean. It is located in Dhofar Governorate. The population density in Salalah is about 457,622 according to NCSI IN 2017.

Salalah is located on the Southern part of Oman, around 1000 kms away from Muscat. It is accessible from Muscat via road, air or sea.

Why SALALAH ?

MARKET REACH

- Ability to cater to wider cross section of customers from a single location.
- Develop new markets with minimal incremental cost.
- Development of new niche markets.

OPERATIONAL FLEXIBILITY

- Single port operating entity.
- Significant scalability and inventory optimization opportunities.
- Comprehensive support facility for value add services.
- No significant changes required to access new markets.

EXCELLENT INFRASTRUCTURE

- Excellent road infrastructure and equipment availability to all GCC markets.
- Adequate open air capacity with a growing airline network to region.

SUSTAINABLE FINANCIAL BENEFITS

- Terminal handling cost about 34 % cheaper than competing hub.
- Proximity to free zone reduces haulage cost and improves cost efficiencies.
- Free Zone incentive to attract new industries into Oman.

SALALAH ŞEHİRİ

Salalah Umman Sultanlığının ikinci en büyük şehridir. Hint Okyanusuna uzanan bir kıyı kentidir. Arap Yarımadasında bulunan eşsiz bir şehirdir. Kuzey tarafında yeşili bol ve gölleriyle birlikte sıradağlar yer alır (yaz sezonunda). Güney tarafında ise her yıl Eylül ayından Haziran ayına kadar güneş gören hoş plajları vardır. Salalah bu dağlık bölgeler ve Hint Okyanusu arasında yer alan bir şehirdir. Zufar Valiliğinde yer alır. Salalah'deki nüfus yoğunluğu 2017 yılında yapılan İstatistiksel Bilgi Ulusal Merkezi sayımına göre 457,622'dir.

Salalah, Umman'ın Güney kısmında Maskat'tan yaklaşık 1000 km uzakta yer almaktadır. Maskat'tan kara, hava veya deniz yoluyla ulaşılabilir.

Neden SALALAH ?

PAZAR ERİŞİMİ

- Tek bölgeden olan müşterilerin ihtiyaçlarını karşılayabilme özelliği
- Asgari düzeyde artan maliyetle yeni piyasalar geliştirme.
- Yeni niş pazarlarının geliştirilmesi

İŞLEVSEL ESNEKLİK

- Tek liman işleten işletme.
- Önemli ölçüde ölçeklenebilirlik ve stok optimizasyon fırsatları.
- Katma değerli hizmetler için kapsamlı destek tesisleri.
- Yeni pazarlara erişim için büyük değişiklikler gerekmez.

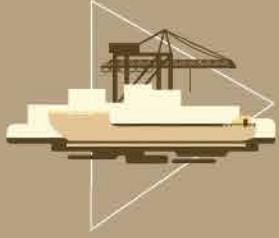
MÜKEMMEL ALTYAPI

- Mükemmel yol altyapısı ve bütün Körfez Arap Ülkeleri İşbirliği Konseyi pazarlarına ekipman mevcutluğu
- Büyüyen havayolu ağı ile birlikte yeterli seviyede açık hava kapasitesi.

SÜRDÜRÜLEBİLİR MALİ FAYDALAR

- Rakip merkezinkinden yaklaşık %34 daha az olan terminal nakliye/aktarma tutarı.
- Serbest bölgeye olan yakınlık nakliye ücretini azaltır ve maliyet etkinliğini artırır.
- Umman'a yeni endüstriler çekmeye teşvik edici Serbest Bölge

CITY INFRASTRUCTURE

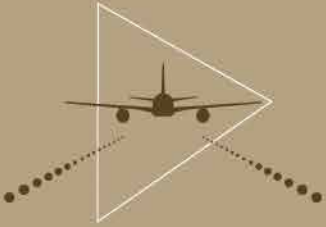


PORT OF SALALAH

Operating since 1998, the Port of Salalah has become one of the most important container, and busiest general cargo facilities in the region, as well as the largest port in Oman. The Port is partly owned and managed by APM Terminals (Maersk), one of the largest container terminal operators in the world. Strategically located at the major East-West Shipping Lane, the Port of Salalah is viewed as the region's best located port in order to access the Middle East, Indian Subcontinent, US East Coast, Africa Coast, Europe, Asia, GCC countries and Red Sea. The port maintains world-class terminal capabilities for liquid bulk and mineral bulk handling, and with its six container berths and 18-metre deep channels, it can accommodate the world's largest container ships. With container traffic at the port having increased seven-fold between 1999 and 2013, the port is capable of handling over 5 million TEUs per year. In addition, our state-of-the art wave-dampening system reduces wave motion to expedite high-speed container unloading.

SALALAH LİMANI

1998'ben beri faaliyette olan Salalah Limanı, Ummandaki en büyük liman olmasının yanı sıra, bölgedeki en önemli konteyner ve en meşgul karışık yük tesislerinden biri olmuştur. Liman, dünyadaki en büyük konteyner terminali işletmecilerinden biri olan APM Terminals (Maersk) tarafından kısmen satın alınmış ve yönetilmektedir. Stratejik olarak büyük Doğu-Batı Nakliye Rotasında yer alan Salalah limanı, Orta Doğu, Hint Altı kıtası, ABD Doğu Yakası, Afrika Kıtası, Avrupa, Asya, Körfez İşbirliği Konseyi ülkeleri ve Kızıl Denize erişim yönünden bölgenin en iyi konumuna sahip limanı olarak görülür. Liman, sıvı yük ve mineral yığın taşıma yönünden birinci sınıf terminal olanaklarını korumaktadır ve altı adet konteyner demir yeri ve 18 metre derinliğinde kanalları sayesinde dünyanın en büyük konteyner gemilerine ev sahipliği yapabilir. 1999 ve 2013 yılları arasında yedi kat artan konteyner trafiği ile liman, yılda 5 milyon adet 20 feet'lik konteyner idare etme kapasitesine sahiptir. Buna ek olarak, teknoloji harikası olan dalga küçültme sistemimiz, yüksek hızlı konteyner boşaltımını sağlamak için dalga devrimini azaltır.



SALALAH AIRPORT

Salalah Airport is one of the most promising destinations, given that its excellence geographic position and the tourism growth it usually witnesses especially during Khareef season. The airport was opened on November 11, 2015 with capacity of about two million passengers a year and that can be expanded to six million passengers. It was built with a construction of PTB floor size 65,638 m², as it has huge potential in terms of systems, equipment and services provided therein, and can receive large aircraft types.

ŞEHİR ALTYAPISI

SALALAH HAVALİMANI

Salalah Havalimanı, mükemmel coğrafi konumu düşünüldüğünde en çok gelecek vaat eden istikametlerden birisidir ve turizm artışı genellikle Yaz sezonunda görülür. Havalimanı yıllık yaklaşık iki milyon yolcu kapasitesiyle 11 Kasım 2015 tarihinde açıldı ve bu sayı altı milyon yolcuya kadar artırılabilir. Bu konuda sağlanan sistemler, ekipmanlar ve hizmetler açısından çok fazla potansiyele sahip olduğundan dolayı 65,638 m²'lik terminal binası zemin alanı ile inşa edilmiştir.

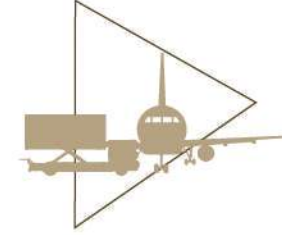


OMAN AIR

Oman Air is the flagship carrier of the Sultanate of Oman and an Official 4 Star Airline (Skytrax 2011). Founded in 1993, the airline has since witnessed massive growth and has played a major role in making Muscat an important traffic hub in the Middle East, supporting the commercial, industrial and tourism sectors.

UMMAN HAVA YOLLARI

Oman Air, Umman Sultanlığının en iyi havayoludur ve Resmi olarak 4 Yıldızlı bir Havayolu şirkettir (Skytrax 2011). 1993 yılında kurulan Oman Air, kurulduğu tarihten itibaren büyük bir artış gözlemlemiş ve Maskat'ı, ticaret, endüstriyel ve turizm sektörlerinde destekleyerek Orta Doğunun önemli merkezlerinden biri olmasında önemli bir rol oynamıştır



OMAN AIR CARGO

Oman Air Cargo is the Cargo Division of Oman Air, the National Carrier of the Sultanate of Oman. Established in 2009, Oman Air cargo has carved a niche for itself as one of the leading air cargo carriers in the Middle East Region. With a belly-hold capacity of over 80 flights per day, the new state-of-the-art cargo handling facility at the HUB in Muscat serves a vast network of scheduled services to Europe, Africa, Middle East, Indian Subcontinent and Far East. Together with the interline partners and trucking network, Oman Air Cargo offers its customers access to over 150 destinations across the world covering all continents. The products and services offered by Oman Air Cargo range from transportation of general cargo to valuables, courier, hazardous goods, live animals and temperature-control goods such as pharmaceuticals, perishables, and much more.

UMMAN HAVA NAKLİYESİ

Umman Hava Nakliyesi, Umman Sultanlığının Ulusal Taşıyıcı Firması olan Oman Air'in Nakliye Bölümüdür. 2009 yılında kurulan Umman Hava Nakliyesi, Orta Doğu Bölgesinde lider hava nakliye taşıyıcılarından biri olarak kendine yer edinmiştir. Günlük 80 uçuştan fazla kapasitesi ve Maskat'taki MERKEZde bulunan modern yükleme boşaltma tesisleri sayesinde Avrupa'ya, Afrika'ya, Orta Doğu'ya, Hint Altı kıtasına ve Uzak Doğu'ya geniş bir tarifeli sefer ağı hizmeti vermektedir. Arahatlar ve kamyon taşımacılığı ağıyla birlikte Umman Hava Nakliyesi müşterilerine tüm dünya genelinde bütün kıtaları içinde barındıran 150 istikamete erişim olanağı sunuyor. Umman Hava Nakliyesi tarafından sunulan ürünler ve hizmetler karışık yüklerden değerli mallara, kuryeye, tehlikeli maddelere, canlı hayvanlara ve eczacılık ile ilgili olan ve çabuk bozulabilen yükler ve daha fazlası gibi sıcaklık kontrolü gerektiren ürünlere kadar uzanan bir ürün yelpazesini kapsar.

SALALAH FREE ZONE

SFZ is a government owned company, formed through a Royal Decree no. 62/2006 to benefit from the strategic location of Salalah city, located at the connection of key, east-west business routes. SFZ strategy is to attract foreign direct investment (FDI) through a set of business-friendly incentives. SFZ has one of Middle East's most developed business environments fostering partnership and collaboration across industries and borders.

Along with its strategic location, SFZ offers world-class infrastructure and support services providing turnkey facilities for both multinationals and start-ups where SFZ is pursuing to be a global leading hub for: Chemicals & Materials Processing Sector; Assembling, Packaging & Packing Sector; Logistics and Distribution Sector. SFZ is adjacent to one of the largest container ports in the world, the Port of Salalah, linking to Africa, the Middle East and Asia to different markets in Europe and the Americas. SFZ provide one stop-shop services for clearance of the government transaction, issue of licenses, registration of investors and services suppliers, rental of warehouses and offices.

SALALAH SERBEST BÖLGESİ

Salalah Serbest Bölgesi, çok önemli yere sahip doğu-batı iş bloğunda yer alan Salalah şehrinin stratejik konumundan faydalanmak için 62/2006 numaralı Ferman ile kurulan bir kamu iktisadi kuruluşudur. SFZ'nin stratejisi bir takım iş dostu teşvik tedbirleri sayesinde doğrudan yabancı yatırımları çekmektir. SFZ, endüstriler ve sınırlar genelinde ortaklık ve işbirliği teşvik eden Orta Doğunun en gelişmiş iş çevrelerinden birine sahiptir.

Stratejik konumunun yanı sıra, SFZ birinci sınıf altyapı sunar ve hem çok uluslular hem de SFZ'nin Kimyasal & Malzeme İşleme Sektörü, Montaj, Ambalajlama & Ambalaj Sektörü, Lojistik ve Dağıtım Sektörüne yönelik olarak dünya çapında lider merkez olmak için takip ettiği genç yenilikçi şirketler için anahtar teslim tesisler sağlayan hizmetleri destekler. SFZ, Afrika'yı, Orta Doğuyu ve Asyayı Avrupa ve Amerikadaki farklı piyasalarla buluşturan dünyanın en büyük konteyner limanlarından biri olan Salalah limanına komşudur. SFZ, devlet işlemlerinin ibrası, lisansların verilmesi, yatırımcıların ve hizmet tedarikçilerinin tescili, depo ve ofislerin kiralanması için tek noktada hizmet sunmaktadır.



INCENTIVES



TEŞVİKLER

100% FOREIGN OWNERSHIP

- No Customs on Imports & Exports.
- No Taxes on Profits or Dividends for 30 years.
- No Tax on Personal Income.
- No Minimum Capital Investment Requirement.
- Omanisation Requirements of only 20%.
- One stop-shop services.

%100 YABANCILARA AİT

- İthalat & İhracatta Gümrük Vergisi yok.
- 30 yıl boyunca Kar veya Temettülden Alınmayan Vergiler.
- Kişisel gelir vergisi yok.
- Asgari sermaye yatırımı gereksinimi yok.
- Yalnızca %20'lik Ummanlaştırma Gereksinimi.
- Tek noktada hizmet sunum.

BENEFITS

- Strategically location on the equatorial trade route.
- Near the fastest growing seaport in middle east in dealing with shipping containers.
- Benefits of distribution and redistribution.
- No Restrictions on Repatriation of Capital, Profits & Investments.
- Saving cost and time.
- Regionally Competitive Low Cost Labour.
- Access to Qualified Domestic & Expat Workforce.
- Close to largest markets like South Asia, Africa, Middle east and Europe.
- Attractive infrastructure and incentives.
- Fast-track Customs Handling & Processing.



FAYDALAR

- Ekvatorial ticaret yolu üzerindeki stratejik noktası.
- Konteyner nakliyatıyla ilgilenen orta doğudaki en hızlı şekilde büyüyen limana olan yakınlığı.
- Dağıtım ve yeniden dağıtımdan elde edilen faydalar.
- Sermayenin, Karların ve Yatırımların Ana Yurda Gönderilmesi Hususunda Sınırlama Olmaması.
- Zamandan ve paradan tasarruf.
- Bölgeye Göre Rekabetçi Düşük Maliyetli İş Gücü.
- Kalifiye Yerli & Yabancı İş Gücüne Erişim.
- Güney Asya, Afrika, Orta doğu ve Avrupa gibi en büyük pazarlara olan yakınlığı.
- Cezbedici altyapı ve teşvikler.
- Hızlı Gümrük İşlemleri & Süreçleri.

SALALAH FREE ZONE TARGETED SECTOR

SALALAH SERBEST BÖLGE SEKTÖREL ODAKLILIK

Chemicals & Materials Processing Sector

- **Building Material** – rubber products, ceramics, pipes, plaster products, etc.
- **Non-metallic Natural Resources** – Limestone, Cement, Metal attapulgit; Aluminium and Magnesium Silicate; Dolomite – Calcium and Magnesium carbonates), etc.
- **Plastic and Chemicals** – Organic and Inorganic Chemicals, Plastics, etc. and Selected metals – Iron, Zinc and their applications.

Assembling, Packaging & Packing Sector

- **Assembling of Equipment** – Machinery, Electronics, Transportation, Medical Equipment, Clothing and Accessories, furniture, etc.; Alternative Energy Sources – Solar, Wind, etc.
- **Food Packaging** – Grains, Food, Animal and Vegetable oils, etc.
- **Medicines and Cosmetics.**
- **Paper Industry, Clothing, Textiles and Recycling.**

Logistics & Distribution Sector

Transfer of logistics and distribution of processed materials and manufacturing of goods in the **Free Zone Logistics.**

Kimyasal & Malzeme İşleme Sektörü

- **İnşaat Malzemesi** – lastik mamüller, seramikler, borular, sıva ürünleri, vb.
- **Metal Olmayan Doğal Kaynaklar** – Kireçtaşı, Çimento, Metal atapulgit; Alüminyum ve Magnezyum Silikat; Dolomit – Kalsiyum ve Magnezyum karbonatlar), vb.
- **Plastik ve Kimyasallar** - Organik ve İnorganik Kimyasallar, Plastikler vb. ve öncelikli metaller – Demir, Çinko ve uygulamaları.

Montaj, Ambalajlama & Paketleme Sektörü

- **Ekipmanın** – Makinelerin, Elektronik Aksamların Montajı, Taşımacılık, Tıbbi Cihaz, Giyecek ve Aksesuar, mobilya, vb.; Alternatif Enerji Kaynakları – Solar, Rüzgar vb.
- **Yemek Ambalajlama** – Tahıl, Yemek, Hayvansal ve Bitkisel yağlar, vb.
- **İlaç ve Kozmetik.**
- **Kağıt Endüstrisi, Giysi, Tekstil ve Geri Dönüşüm.**

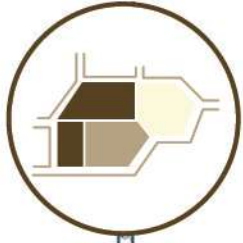
Lojistik & Dağıtım Sektörü

Lojistik nakli ve işlenmiş malzemelerin dağıtımı ve Serbest Bölge Lojistiğinde mal üretimi



SFZ PRODUCTS

Offers a range of products specially designed to meet a variety of business needs.



Plots of Land
Arazi Parçası



Business Support Services
İş Destek Hizmetleri



SFZ ÜRÜNLERİ

Özellikle çok çeşitli iş ihtiyaçlarını karşılamak için tasarlanmış ürün yelpazesi sunar



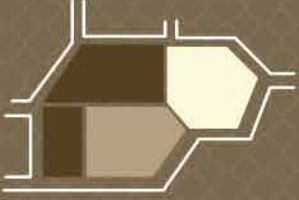
Warehouse & Light
Industrial Units
Depo & Hafif Sanayi Birimleri



Outlets
Satış Noktalari



SELECT THE TYPE THAT SUITS YOUR BUSINESS BEST



PLOTS OF LAND

SFZ provides plots of various sizes for short and long term lease, ideal for companies to construct their own facility. Each plot varies from 1,000 sq. m. to larger sizes to fit to the specific requirements of individual customers.

İŞİNİZE EN UYGUN TÜRÜ SEÇİNİZ

ARAZİ PARÇASI

SFZ, şirketler için kendi tesislerini kurma konusunda ideal olan kısa ve uzun vadeli kiralık olarak farklı boyutlarda arazi parçaları sağlar. Her bir parça bireysel müşterilerin belirli taleplerini karşılayabilmek için 1000 metrekareden başlayarak daha yüksek boyutlara ulaşır.



WAREHOUSES & LIGHT INDUSTRIAL UNITS (LIU)

SFZ offers pre-built warehouses and LIU to meet customers' needs for high quality storage and light manufacturing. The pre-built warehouses are thermally insulated, purpose-built units available on rent and are fitted with office space. These units have several access points.

DEPOLAR & HAFİF SANAYİ BİRİMLERİ (LIU)

Müşterilerin yüksek kalite depolama ve hafif imalat ihtiyaçlarını karşılamak için SFZ önceden inşa edilmiş depolar ve Hafif Sanayi Birimleri sunar. Önceden inşa edilmiş depolar termal açıdan izole, özel amaca yönelik üniteler kiralıktır ve büro alanı ile teçhizatlandırılmıştır. Bu birimlerin bir çok erişim noktası vardır.



BUSINESS SUPPORT SERVICES

Business Support Services (BSS) provides ready-to-use, fully furnished and equipped offices, besides unfurnished office spaces, ensuring each customer the ability to express their own individual style.

SFZ tailors each BSS to suit the needs of each customer and works to tailor interior layout and design to requested specifications.

İŞ DESTEK HİZMETLERİ

İş Destek Hizmetleri (BBS) dayalı döşeli olmayan ofislere nazaran kullanıma hazır, dayalı döşeli, ve donanımlı ofisler sunar ve bütün müşterilerin bireysel zevklerini yansıtmaya olanağı sağlar. SFZ bütün müşterilerinin ihtiyaçlarına uyması için İş Destek Hizmetlerini, iç düzeni ve talep edilen belirlemeleri uygun hale getirir.



OUTLETS

SFZ headquarter building has a choice of outlets spread across the building available for rent, enabling you to sell your products within SFZ. Customers can establish the outlets with ease and convenience.

SATIŞ NOKTALARI

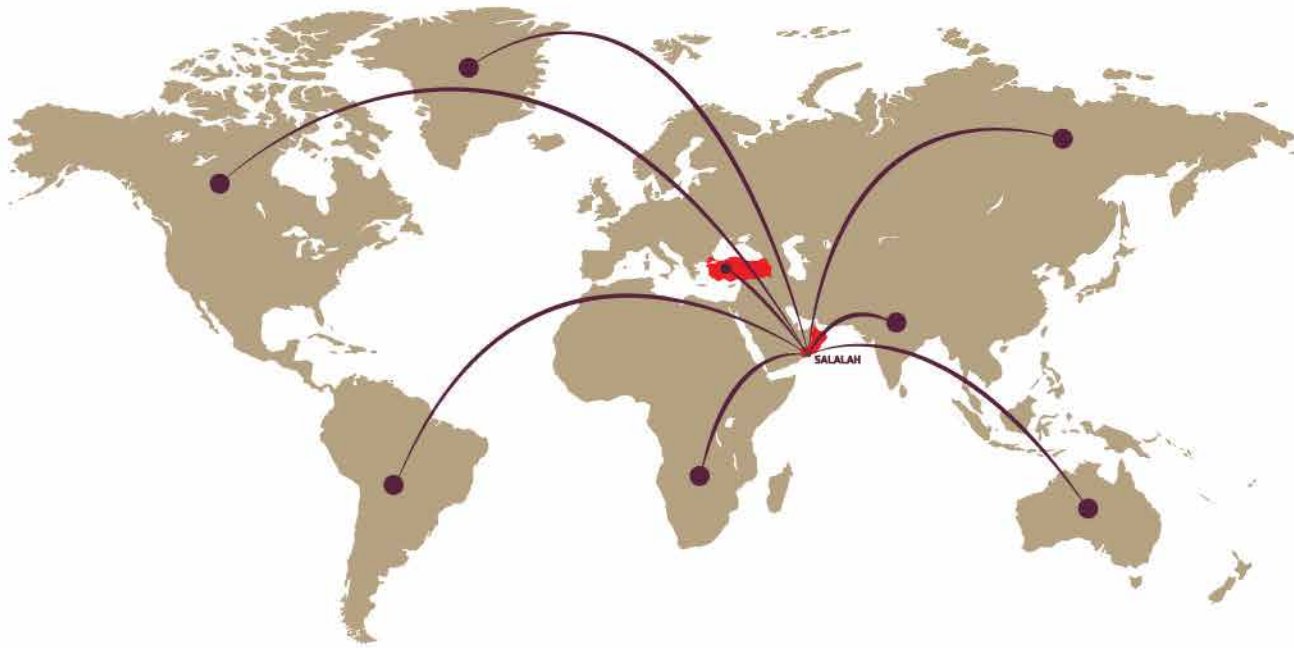
SFZ merkez binasının kiralamaya müsait olan ürünlerinizi SFZ içerisinde satabileceğiniz bina içerisinde yer alan satış noktaları vardır. Müşteriler kolaylıkla satış noktaları kurabilirler.

SALALAH FREE ZONE
TURKISH INTERNATIONAL HUB
SALALAH SERBEST BÖLGE
ULUSLARARASI TÜRK MERKEZİ





Turkish International Hub
Uluslararası Türk Merkezi



- Distance from Airport - 12km
- Havaalanı uzaklığı 12km

- Distance from Seaport - 10km
- Liman uzaklığı 10km



Registration



SFZ proposals two types of formation for set up legal entities that permit investors to establish their business to suit individual requirements. In order to form a legal entity within SFZ you can choose one of the following formation types:

FREE ZONE COMPANY (FZC)

FZC – This type of entity formation is principally Limited Liability Company (LLC) within SFZ. Registration as FZC permits the investor for a multiple shareholders (shareholders can be individual persons and non-individual /company).

DOCUMENTS REQUIRED FOR FZC	
Brief Project/Summary / Description.	Document Application Forms.
Passport copy of Owner/Manager.	Company profile.
Memorandum of Association & Articles of Association.	Power of Attorney Appointing a Representative.
Bank Account Statement for the last 6 months.	

FREE ZONE ESTABLISHMENT (FZE)

FZE – This type of entity formation is principally establishment within SFZ. Registration as FZE permits the investor for a single shareholder (shareholder can be individual person, non-individual /company).

DOCUMENTS REQUIRED FOR FZE	
Project Brief / Summary / Description.	
Document Application Forms.	
Passport copy of Owner / Manager.	
Company Profile.	
Bank Account Statement for the last 6 months.	

SFZ, yatırımcıların işlerini bireysel gereksinimlere uyacak şekilde kurmalarına izin veren tüzel kişiler kurmak için iki tür oluşum önerir. SFZ’de tüzel bir kişilik oluşturmak için aşağıdaki oluşum türlerinden birini seçebilirsiniz:

SERBEST BÖLGE ŞİRKETİ (FZC)

SERBEST BÖLGE ŞİRKETİ – Bu tür varlık oluşumu esasen SFZ bünyesindeki Limitet Şirkettir (LLC). SERBEST BÖLGE ŞİRKETİ olarak kayıt yapmak, yatırımcının birden fazla hissedar için izin vermesini sağlar (hissedarlar bireysel ve bireysel olmayan / şirket olabilir).

SERBEST BÖLGE ŞİRKETİ İÇİN GEREKLİ OLAN EVRAKLAR	
Projenin Kısaca Özeti / Tanımı	Başvuru Belgesi Formları
Sahibin/Müdürün Pasaport kopyası	Firma Profili
Şirket Kuruluş Sözleşmesi & Şirket Sözleşmesi	Temsilci Atama Vekaletnamesi
Son 6 aya ait Banka Hesabı Özeti.	

SERBEST BÖLGE KURULUŞLARI (FZE)

SERBEST BÖLGE KURULUŞLARI – Bu tür varlık oluşumu esasen SFZ içerisinde kurulur. SERBEST BÖLGE KURULUŞLARI olarak kayıt yapmak, yatırımcıya tek bir hissedar için izin vermesini sağlar (hissedarlar bireysel ve bireysel olmayan/şirket olabilir).

SERBEST BÖLGE KURULUŞLARI İÇİN GEREKLİ OLAN EVRAKLAR	
Projenin Kısaca Özeti / Tanımı	
Başvuru Belgesi Formları	
Hissedarın / Yöneticinin Pasaport kopyası	
Firma Profili	
Son 6 aya ait Banka Hesabı Özeti.	

SMART STEPS TO SUCCESS

Any Company / Establishment Seeking to Register Under SFZ.

FOLLOW THE SIMPLE STEPS, BELOW

Investor Inquiry Sheet

- Fill Investor Inquiry Sheet.
- Submit Filled Investor Inquiry Sheet to SFZ

Initial Approval

- The initial evaluation step determines the decision for initial acceptance or rejection of the investor Inquiry according to the investor inquiry sheet submitted.

SFZ Registration Forms

Once initial approval is granted, SFZ specialist will guide the inquiry owner (investor) through official registration process in SFZ by requesting the investor to submit filled required application and related documents.

Final Approval

After finalizing the registration process, SFZ license will be issued for the investor to start their business with granted economic incentives and benefits.

BAŞARI İÇİN ZEKİ ADIMLAR

SFZ'ye Kayıt Olmak İsteyen Herhangi Bir Şirket / Kuruluş,

AŞAĞIDAKİ ADIMLARINI TAKİP, AŞAĞIDAKİ

Aşağıdaki Basit Adımları Takip Edin

- Yatırımcı Sorgulama Belgesi
- Yatırımcı Sorgulama Belgesini Doldurun
- Doldurulan Yatırımcı Sorgulama Belgesini SFZ'e Verin

İlk Onaylama

- İlk değerlendirme adımı, verilen Yatırımcı Sorgulama Belgesine göre Yatırımcı Sorgusunun ilk kabulü veya reddedilme kararını belirler

SFZ Kayıt Formları

İlk onay verildikten sonra SFZ uzmanı, yatırımcıdan doldurulmuş olan gerekli başvuruları ve ilgili belgeleri sunmalarını isteyerek, başvuru sahibine (yatırımcı) SFZ'deki kayıt sürecinde rehberlik edecektir.

Son Onaylama

Kayıt işlemini tamamladıktan sonra, yatırımcının yatırımlarına ekonomik teşvikler ve avantajlarla başlaması için SFZ lisansı verilecektir.



FEES STRUCTURE

ÖDEMELERİ YAPILANDIRMA



4.1 REGISTRATION FEES

Type	One-time Fee / OMR
Free Zone Company (FZC)	1000
Free Zone Establishment (FZE)	800

4.1 KAYIT ÖDEMELERİ

Tür	Tek Seferlik Ödeme / OMR
Serbest Bölge Şirketi (FZC)	1000
Serbest Bölge Kuruluşu (FZE)	800

4.2 LICENSE FEES

License Type	Annual Fees / OMR
Commercial	1100
Industrial	1200
Services	1300
Tourism	1500
Real Estate	1500

LİSANS ÖDEMELERİ

Lisans Türü	Yıllık Ödemeler / OMR
Ticari	1100
Endüstriyel	1200
Hizmetleri	1300
Turizm	1500
Gayri Menkul	1500

4.3 PRODUCT FEES

4.3.1 Plots of Land

Area in Sqm.		Business type & rent in Baisa/Sqm (per annum)				
From	To	Industrial	Commercial	Service	Real-estate	Tourism
1001	3000	2000	2100	2300	3500	4500
3001	5000	1900	2000	2100	3000	4000
5001	10.000	1800	1900	2000	2800	3800
10001	20.000	1700	1800	1900	2500	3500
20001	30.000	1600	1700	1800	2200	3000
30001	40.000	1500	1600	1700	2000	2300
40001	50.000	1400	1500	1600	1800	2000

4.3 ÜRÜN ÖDEMELERİ

4.3.1 Arazi Parçası

Metre Kare Cinsinden Alan		İş türü & Baisa/Metre kare cinsinden kira değeri (her yıl için)				
-den	-e kadar	Endüstriyel	Ticari	Hizmet	Gayri Menkul	Turizm
1001	3000	2000	2100	2300	3500	4500
3001	5000	1900	2000	2100	3000	4000
5001	10.000	1800	1900	2000	2800	3800
10001	20.000	1700	1800	1900	2500	3500
20001	30.000	1600	1700	1800	2200	3000
30001	40.000	1500	1600	1700	2000	2300
40001	50.000	1400	1500	1600	1800	2000

4.3.2 Warehouses & Light Industrial Units (LIU)

Area in Sqm.		Business type and rent in OMR (per annum)	
From	To	Industrial	Commercial
0	1000	40	45
1001	3000	35	40
3001	5000	30	35
5001	10.000	25	30
10001	above	20	25

4.3.2 Depolar & Hafif Sanayi Birimleri (LIU)

Metre Kare Cinsinden Alan		İş türü & OMR cinsinden kira değeri (her yıl için)	
-den	-e kadar	Endüstriyel	Ticari
0	1000	40	45
1001	3000	35	40
3001	5000	30	35
5001	10.000	25	30
10001	above	20	25

For above 4.3.1 and 4.3.2 the charges shall be increased every five years with a rate of 25% during the validity of the lease contract signed between the employer and the operating company.

Yukarıdaki 4.3.1 ve 4.3.2 maddeler için, işletme şirketi arasında imzalanan kira sözleşmesinin her beş yılda bir olmak üzere ücretler %25 oranında artırılır.

4.3.3 Business Support Services & Outlets

Area in Sqm.	Rate per Annum
0-20	183
21-40	169
41-60	156
61-100	142
101 above	129

4.3.3 İş Destek Hizmetleri & Satış Noktaları

Metre Kare Cinsinden Alan	Her yıl için Oran
0-20	183
21-40	169
41-60	156
61-100	142
101 ve üzeri	129

For above 4.3.3 the charges shall be increased every two years with a rate of 10%.

Yukarıdaki 4.3.3 madde için, ücretler iki yılda bir %10 oranında artırılır..

APPLICATION FORM

APPLICATION FORM

NAME: _____

ADDRESS: _____

CITY: _____

STATE: _____

ZIP: _____

DATE: _____

BY: _____

REMARKS: _____



REGISTRATION & LICENSE APPLICATION

Ref. No.:

Submission Date: / /

TYPE OF COMPANY (please select one)

Free Zone Company (FZC)

Free Zone Establishment (FZE)

APPLICANT DETAILS

Founder (s) / Shareholder (s) Names	Gender/Age	Nationality	Passport No.	Occupation	Number of Shares	Amount of Shares
1-						
2-						
3-						

ADDRESS DETAILS

Legal representative name (s)	
Address	
Telephone Number	
Email Address	
Website	
Fax number	

PROJECT DETAILS

Activity:	
Annual Turnover. US\$	
Main Export	
Main Import	
Key Market Served	

Type of License Required:

- Industrial
- Service
- Commercial
- Real-estate
- Tourism

PROPOSED NAMES

1	
2	
3	
Share Capital	

FACILITIES REQUIRED

LAND

Size (SQ. M.)	Expected Date of Lease

WAREHOUSE

Size (SQ. M.)	Expected Date of Lease

EMPLOYMENT PLAN

Employment Category	Local Full Time	International Full Time
---------------------	-----------------	-------------------------

1. Managerial		
2. Technical and Supervisory		
3. Factory: a- Skilled b- Unskilled		
4. Sales Clerical and Other Workers		
a- Number of people utilizing the site b- During Construction		
Total Expected Omani Nationals (20%)		

Undertaking

I / We hereby irrevocably undertake and agree to comply fully with all implementing Regulations and other conditions issued from time to time by SFZCO and with the term and conditions of the lease and license, which is issued and agree to abide by all application laws, rules and regulation in SFZCO and in the Sultanate of Oman. We will adopt the best available practice for protection of environment safety and health of the people and assets.

Name of the Authorized Signatory (on behalf of Founders)	Designation	Signature & Date

FOR OFFICIAL USE

Registration Approval

Name	
Sign	
Date	

LIST OF DOCUMENT REQUIRED FOR SUBMITTAL

	Free Zone Establishment	Free Zone Company
1. Brief Project Summary / Description	✓	✓
2. Document Application Form	✓	✓
3. Passport copy of Owner / Manager	✓	✓
4. Memorandum of Association & Articles of Association		✓
5. Company Profile	✓	✓
6. Power of Attorney Appointing a Representative		✓
7. Bank Account Statements for Last Six Months	✓	✓

Note:

- Document no. 4 is subject to be notarize and attested by the ministry of Foreign Affairs and by the Sultanate of Oman embassy in the country of origin and/or the relevant embassy in the sultanate of Oman.
- Appointment letter for local audit and auditor's acceptance of the same.
- Appointment letter for local reprehensive (legal), if any.

IMPORTANT DETAILS

- The application should be typed in Capital letters.
- SFZCO reserves the right to call for any extra documents if necessary.
- Each legal documents has to be sealed if more than one page.
- Kindly refer to Free zone law No. 56/2002, Salalah Free Zone royal decree No. 62/2006 and SFZ Rules & Regulation.

PROJECT TECHNICAL PROFILE

Ref. No.:

--	--	--	--	--	--	--	--	--	--

No: Submission Date: / /

MATERIAL – IMPORT/ EXPORT STORAGE & TRANSPORTATION

Details	Type of Materials (Specify)	Volume (Tons/d or cum/d)	Methods of Storage	Traffic volume expected per day	* Mode of Transportation
Raw Material (Export)					
Product (Export)					
* Mode of Transportation					
Air freight _____ %					
Sea freight _____ %					
Road freight _____ %					

PRODUCTION SCHEDULE

Max Attainable Annual Production Capacity per 8hrs.shift:

Manufacturing / Assembly / Processing & Machinery Required

- i. Explain with the aid of a flow chart the proposed Manufacturing Process.
- ii. Simple sketch of industrial building to the dimensions to accommodate machineries/ plants as per one above.

* Treatment & disposal industrial sewage in the responsibility of investor and according to the Rules and Regulations of MECA (Ministry of Environment & Climate Affairs).

LAND & UTILITIES DEMAND		
Investor's Requirements	Quantity	Remarks
Land Demand		
Power Demand (Peak Demand)		
Water Demand m ³ / day		
Natural Gas Demand / day		
Treated Water		
Telecom Lines (Land & Internet)		
Domestic Sewage		
Industrial Sewage		

No.	GENERAL ENVIRONMENTAL HEALTH & SAFETY INFORMATION	YES	NO
1	Does your project have any anticipated Environment, Health or Safety concerns?		
2	Does your project involve any manufacturing / assembly / service / repair operations?		
3	Does your project involve any import export / storage of any type of chemical / gases radioactive material?		
4	Does your project involve storage of any highly combustible or flammable items (paper, pulp, perfumes, oils / lubricants, garments, cotton etc.) in the leased premises?		
5	To assess this requirement in details, please specify all material intended for storage in the application form		

No.	DETAILS	YES	NO
6	Will there be any requirement for drainage inside the warehouse building with holding tank?		
7	Will there be any requirement for electricity, fuel (oil / gas) utilization for the project?		
8	Will there be any requirement for industrial processes / cooling / wash waters?		
9	Will there be any requirement of direct berth access?		
10	Is there any planned for project. If yes, please provide detail.		
11	Is there any chimney planned for project. If yes please provide detail		

ENVIRONMENT HEALTH & SAFETY

Requirements for Production Processes / Services

No	Details	YES	NO
1	Requirements		
2	Process Description		
3	Process Hazzard Identification		
4	Machinery Layout		
5	Recycling Plan		

2. Period of Operations: Seasonal Shift Business Hours

3. Available Details of Chemicals, Fuels

Scientific and Commercial Names, Types, Quantities, Chemical Composition, Sources of Raw Materials or Energy Consumed and Attached Material Safety Data Sheet).

Yes (If Yes Enclose a Plan)

No

4. Available details of methods of transportation, handling and storage of chemicals, fuel and final products

Yes (If Yes Enclose a Plan)

No

SOLID NON-HAZARDOUS WASTE / HAZARDOUS WASTE (During Construction & Operation Phase)

Source & Nature	Quantities	Methods of Treatment / Control	Final Disposal Site / Method

WASTE WATER, DRAINAGE AND SURFACE RUN OFF (During Construction & Operation)

Source & Nature / Desalinated water (Sea / Well)	Volumes	Methods of Treatment / Control	Final Disposal Site / Method

EXPECTED IMPACTS ON AIR QUALITY (During Construction & Operation Phase)

Source & Nature of air emissions	Quantities	Methods of Treatment / Control	Final discharge (Indicate proposed physical stack height and location)	Monitoring / Modelling of Air

Identify and quantify noise and vibration sources

- a. Public Environment (Outdoors)
- b. Working Environment (Indoors)

ENVIRONMENTAL IMPACTS (Describe Briefly)

1. Expected impact on people, building and man-made structure:	
2. Expected impact on plants, animals: (Loss or damage to habitats or trees, and other plants and animals species including marine)	
3. Expected impacts on land: (Topography, soil or beach erosion, land use, natural drainage, etc.)	

List all other Environmental Permits or Licenses held by the investor for the same location and/or related operations

- 1. _____
- 2. _____
- 3. _____

Notes and Guidelines:

- For starting construction activity, Investor shall obtain necessary permits from SFZ.
- Investor shall submit EIA (Environmental Impact Assessment) report if SFZ ask for.
- If chemicals/ oils/ perfumes are planned for trade/ storage/ processing, Material Safety Data Sheets of the same should be attached/ furnished along with maximum quantities of storage/ use at any given time. No local/ international controlled/ prohibited chemicals (as per issued list from time to time) shall be dealt with specific approval from QHSSE Directorate.
- No chemicals/ oils/ dangerous/ hazardous goods etc. (As determined by QHSSE Directorate) shall be traded/ stored/ handled at the premises without specific approval from QHSSE Directorate.
- Storage configurations and manufacturing operations within the premises shall follow the QHSSE Directorate. requirements and the premises should be kept clean. Installation of racking/ machines etc. (If any) shall warrant QHSSE Directorate approval and no outside (rear of pre-built warehouse) storage is permitted.
- Special fire protection/detection and QHSSE measures may be need to be incorporated based on type and quantities of materials stored/ type of operations and will further assessed during the operational stage of the project. In the same regard, please note that the storage of tires, perfumes, paper/ pulp products etc. and certain operations may necessitate installation of automatic sprinkler systems at the client's costs.

DECLARATION

I / We hereby declare that to the best of my / our knowledge and belief that all the particulars furnished in this Project's Technical Profile are true and accurate.

I / We understand that if any information given here above is found incorrect that it will affect the License Application and the License Renewal. I / We further agree to abide by all applicable Laws, Rules and Regulations in SF ZCO.

Signature of Investor's Representative

Name & Designation _____

Date

Name & Seal of the Firm _____

MEETING OF THE SHAREHOLDERS / BOARD OF DIRECTORS

MINUTES OF THE MEETING OF THE SHAREHOLDERS / BOARD OF DIRECTORS OF [_____]

Name of Company _____,

Commercial Registration Number _____]

On the _____ of _____ the Shareholders / Board of Directors of _____ ("Company") unanimously resolved in the meeting held at [_____ Location: _____] as follows:

1. TO CONSIDER AND APPROVE THE PROPOSAL TO INVEST IN THE SHARE CAPITAL OF [_____] SFZCO LLC

A) INVESTMENT

"RESOLVED THAT the Company shall invest in cash, a sum not exceeding RO [_____] (----- Omani Rials) towards [----- no. of -----] shares having a nominal value of RO [_____] (----- Omani Rials) per share corresponding to [-----%] equity Share Capital of a wholly Owned Subsidiary Company – which shall be a Company with Limited Liability to be established in the Salalah Free Zone in the Sultanate of Oman as per the prevalent laws of Sultanate of Oman."

B) INCORPORATION

"RESOLVED FURTHER THAT the aforesaid company shall have the name and style '[_____] SFZCO LLC' or such other name as may be approved by the Ministry of Commerce and Industry (MOCI) or any other relevant authority in the Sultanate of Oman and be incorporated as a wholly owned subsidiary in the Salalah Free Zone in accordance with the applicable laws and regulations prevailing in the Sultanate of Oman."

C) SHAREHOLDERS

"RESOLVED FURTHER THAT the shareholders of the aforesaid company shall be:

Name of Shareholders	Nationality	Percentage	No. of Shares	Subscription amount in Omani Rials (RO)
TOTAL		100%		

D) OBJECTIVE

“RESOLVED FURTHER THAT the objective of the aforesaid company shall be [_____].”

E) MANAGEMENT

“RESOLVED FURTHER THAT the authorized signatories / managers of the aforesaid company shall be the following persons, with such authority as elaborated upon in its Constitutive Contract:

- a. [name], [_____] national, holder of Passport no. [PP No.] and/or
- b. [name], [_____] national, holder of Passport no. [PP No.].

F) UNDER FORMATION BANK ACCOUNT

“RESOLVED FURTHER THAT an under formation bank account be opened or re-activated or new accounts be opened with any bank in the Sultanate of Oman including but not limited to Bank [_____] to receive respective payments towards the share capital by the shareholders of the aforesaid company.”

“RESOLVED FURTHER THAT a special Power of Attorney on behalf of the Company be provided to [name], [_____] national, holder of Passport no. [_____] and/or [name], [_____] national, holder of Passport no. [_____] who is/are hereby appointed and authorized singly / jointly, to complete all formalities and execute and sign all documents including but not limited to the shareholders agreement, the constitutive contract, investors' form, sub usufruct agreement, bank account opening documentation and all other relevant documentation, necessary to give effect to setting up of the aforesaid company in the Salalah Free Zone, Sultanate of Oman.”

“RESOLVED FURTHER to appoint [name of individual or law office etc], Sultanate of Oman, to represent the Company before all governmental bodies in connection with the incorporation/setting up of the aforesaid company in the Salalah Free Zone, Sultanate of Oman.”

(Name & signatures of the Shareholders / Board of Directors)

SPECIAL POWER OF ATTORNEY

BY THIS SPECIAL POWER OF ATTORNEY, I, [name], [_____] national, holder of Passport no. [_____], in my capacity as [_____] of [name of Company], a company incorporated under the laws of [_____], having commercial registration no. [_____], and its registered office at [_____] (hereinafter referred to as "**Company**"), pursuant to the Resolutions passed at the meeting of the Shareholders / Board of Directors of the Company on _____, do hereby nominate, authorize, empower and appoint [name], _____ national, bearing Passport no. [PP no.] ("**the Attorney**") to act as the true and lawful attorney of the Company to do and perform the following things and acts:

1. To handle the incorporation of a proposed subsidiary (limited liability company) of the Company with the name/style, '[_____] SFZCO LLC' or such other name as may be approved by the Ministry of Commerce and Industry, Sultanate of Oman in the Salalah Free Zone, Sultanate of Oman with the following constitution:

Name of the Shareholder	Percentage	No. of Shares	Subscription Amount (in RO)
TOTAL	100%		

2. To appear on behalf of the Company before the Ministry of Commerce and Industry, Oman Chamber of Commerce and Industry or any other relevant authorities in the Sultanate of Oman, as and when necessary, to sign, execute all requisite documents including but not limited to the shareholders agreement, the investors' form, the constitutive contract, the sub usufruct agreement, bank account opening documentation etc., necessary to give effect to the incorporation / setting up of the proposed new company in the Salalah Free Zone, Sultanate of Oman.
3. To do any or all other acts and things that may be necessary or incidental to the incorporation/setting up of the proposed new company.

I DECLARE that the powers granted to [name of attorney] through this Special Power of Attorney shall cease on the successful incorporation/setting up of the proposed new company in the Salalah Free Zone, Sultanate of Oman.

IN WITNESS WHEREOF, I, [name], [_____] of the said [Company name] have hereto signed at _____ on this _____ day of _____.

For [name of Company] _____ [Name] _____ [Designation] _____

Witnesses:

1. _____
2. _____

DISCLAIMER

The party or the parties who refer to the Marketing Kit clearly understand that this guide is an informative document and to be used for information purpose only. There will be no legal liability on the part of SFZCO for any omissions or commissions. This document cannot be used as a legal documents for entering into any agreement, contract etc.

FERAGAT

Pazarlama Kitine başvuran taraf veya taraflar, bu kılavuzun bilgilendirici bir belge olduğunu ve yalnızca bilgi amaçlı kullanılacağını açıkça anlamaktadır. Herhangi bir ihmal veya ilave SFZCO adına herhangi bir yasal sorumluluk olmayacaktır. Bu belge, herhangi bir anlaşmaya, sözleşmeye vb şeylere girmek için yasal bir belge olarak kullanılamaz.

İletişime geçin... Başlayın
Get in touch... Get started



info@sfzco.com



www.sfzco.com



sfzco

SALALAH FREE ZONE COMPANY S.A.O.C.

SALALAH

P.O. Box: 87, Auqad, P.C: 217, Sultanate of Oman.

Tel: +968 23 132 500 | Fax: +968 23 132 400

MUSCAT

P.O. Box: 258, Jawharat A'Shatti, P.C: 134, Sultanate of Oman.

Tel: +968 24 601 333 | Fax: +968 24 694 555